



RAJUGA
INVISIBLE INVINCIBLE

POLARIS
SOLUTIONS

OUR STORY

Polaris Solutions Ltd, was founded in 2010 by two former IDF SOF fighters to increase soldier's battlefield survivability. We use our expertise to create innovative and effective Signature Management and Tactical Textiles and survivability solutions. Our products are being used daily by SOF around the globe.

OUR BRANDS:

RAJUGA – State of the art Camouflage and Concealment products
OSO GEAR – Tough and Durable Tactical Textiles
HOTARU - Innovative IFF thermal infrared emitters
SOLOMON - Signature Management Supremacy



TABLE OF CONTENTS

OUR INNOVATION	>> 4
SENSOR CONCEALMENT	>> 7
PERSONAL	>> 10
OBSERVATION POSTS CONCEALMENT	>> 32
VEHICLES	>> 44
TRAINING AND SOLUTIONS	>> 52





Visual



FIR



FIR

TVC SUBSTANCE

The modern battlefield is an environment unlike any before, increasingly saturated by state of the art observation sensors. To ensure the survival of our troops, these sensors must be obstructed. Our TVC (Thermal Visual Concealment) overcomes a wide variety of sensor types.

SPEC

- ▷ TVC Substance comes in 4 basic types: TVC50, TVC100, TVC150
- ▷ TVC50:
 - Total Weight- 390gr per sqm
 - Thickness- 400 microns
- ▷ TVC100:
 - Total Weight- 550gr per sqm
 - Thickness- 450 microns
- ▷ TVC150:
 - Total Weight- 700gr per sqm
 - Thickness- 500 microns
- TVC2000:
 - Total Weight- 1.35kg per sqm
 - Thickness- 7mm
- TVC3000:
 - Total Weight- 1.5kg per sqm
 - Thickness- 11mm
- ▷ Dimensions: TVC products are manufactured in a standard width of 1.25 m. Wider products are available per customer request

PATTERNS



3D CAMO

Our TVC's form is foldable and moldable, enabling the end user to adapt it for a specific AOR. The end user can manipulate the TVC to imitate any 3D object in the environment, and then fold it back into a 2D form, repeatedly.



Rolled TVC Panel



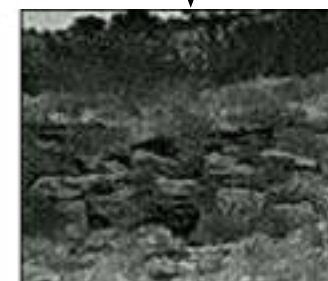
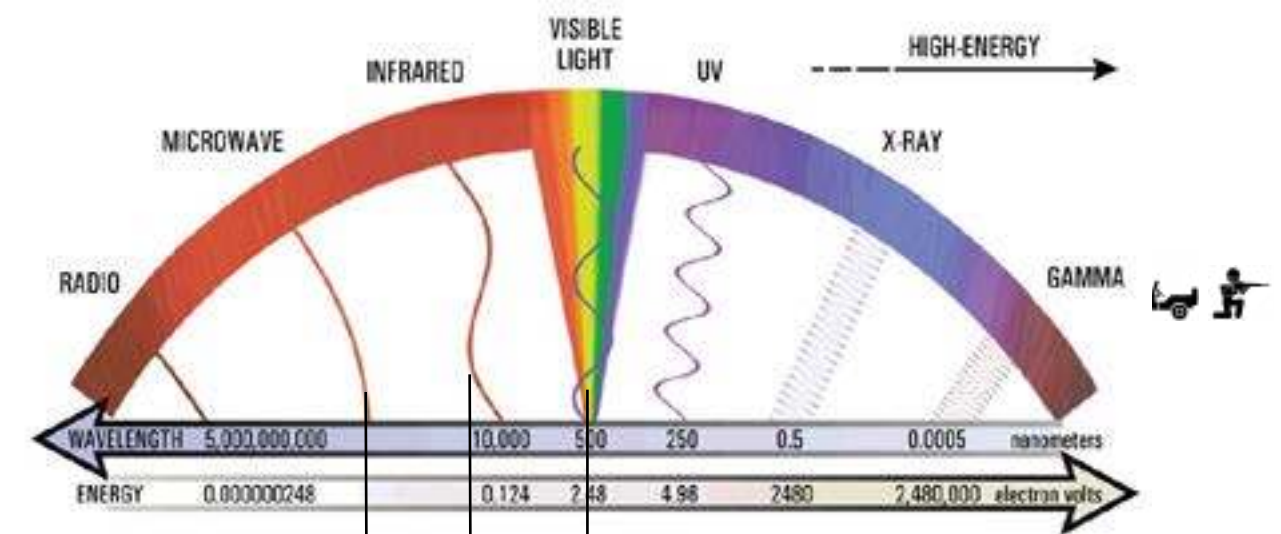
Folded TVC Panel



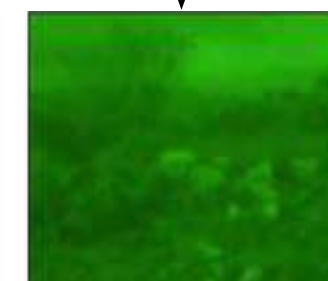
Molded TVC Panel

MULTISPECTRAL

The TVC conceals objects in the **Visual**, **IR** and **FIR** spectrum.



FIR



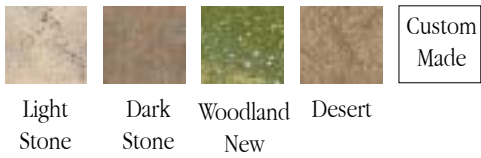
IR



Visual

2-SIDED COLORATION

The TVC can be printed on each side to resemble the coloration of a specific or general AOR. We developed a digitized coloration technique that can generate any color pattern from basic colors. This enables us to rapidly develop a tailor made camouflage pattern (see develop camo).



CLOSE PROXIMITY TO TARGET

When operating in a complex asymmetric warfare environment, you want to be able to get as close to your target as possible without being detected. TVC products provides you with the advantage of surprise, while degrading the ability of enemy ambushers to detect you from afar.



Sniper 5M



Vehicle 50M

SENSORS CONCEALMENT-TVC

SENSORS CONCEALMENT-FABRIC

SENSORS CONCEALMENT



TVC SENSOR COVERS

Battlefield sensors have boosted operational effectiveness by providing reliable information generated by sensors to tactical commanders. For full effectiveness, however, sensors must be concealed from the enemy.

We offer a wide range of tailor-made sensor covers, to meet specific requirements.

FEATURES:

- ▷ Enables full sensor operation
- ▷ All band broadcast capability
- ▷ Special apertures for antenna and cables
- ▷ Weatherproof design option
- ▷ 3D reshapable cover
- ▷ Reduces sensor detectability to 1m range
- ▷ Weather resistant
- ▷ Highly durable
- ▷ Perfect for long lasting missions
- ▷ Can be designed to imitate any object



FABRIC SENSOR COVERS

Battlefield sensors have boosted operational effectiveness by providing reliable information generated by sensors to tactical commanders. For full effectiveness, however, sensors must be concealed from the enemy.

We offer a wide range of customized sensor covers, to meet specific requirements.

FEATURES:

- ▷ Enabling full sensor operation
- ▷ All band broadcast capability
- ▷ Fabric permits sensor see through in all wavelengths (visual, thermal, radar etc;)
- ▷ Special apertures for antenna and cables
- ▷ Weatherproof design option
- ▷ Feather light and low volume
- ▷ Reduces sensor detectability to 10m range
- ▷ Highly durable
- ▷ Easy and rapid setup
- ▷ Perfect for urgent, low prep time missions



TVC PANELS

SNIPER KIT-TVC100

SNIPER KIT-TVC100 2X3

BACKU-BACKPACK COVER

RAID CAMO SUIT

FOLIAGE RAID CAMO SUIT

COUNTER TRACKING OVERSHOE

MITZNEFET

JAG HIDE

RAJUGA MASK

SHOOTING PANEL

RAJUGA PONCHO

RAJUGA PONCHO ULTRA LIGHT

MESH GHILLIE SUIT

STRETCHER STRAPS SET

RAJUGA VIPER HOOD

PERSONAL



TVC PANELS

- ▷ Basic concealment panels to hide gear, backpacks and sensors
- ▷ Personal/Team camouflage component
- ▷ Panels composed of unique TVC substance
- ▷ TVC panels printable on both sides according to specifications

PATTERNS



INTENDED USE



TVC PANELS

	SIZE	TOTAL WEIGHT	S/N
TVC50M	60X60 cm	150 gr	9002-0051
TVC50L	100X125 cm	540 gr	9002- 0082
TVC50XL	200X125 cm	1 kg	9002-0021
TVC50XXL	250X125 cm	1.3 kg	9002-0083
TVC100M	60X60cm	218 gr	9002-0061
TVC100L	100X125 cm	760 gr	9002-0006
TVC100XL	200X125 cm	1.5 kg	9002-0007
TVC100XXL	250X125 cm	1.8 kg	9002-0016
TVC150M	60X60 cm	277 g	9002-0004
TVC150L	100X125 cm	960 g	9002-0003
TVC150XL	200X125 cm	1.9 kg	9002-0002
TVC150XXL	250X125 cm	2.4 kg	9002-0001



SNIPER KIT TVC-100

Sniper. The ultimate hunter.
We bring you a state of the art
Concealment kit to enable you to close in
on your target while remaining undetected
in the visual, IR and FIR spectral range.
The Kit includes a backpack cover and
a personal cover both constructed from
our unique TVC substance.

PARTS

- ▷ TVC100XXL (Shooting panel S/N 9002-0030)
- ▷ TVC100L (Backu S/N 9002-0025)
- ▷ Pack Sac

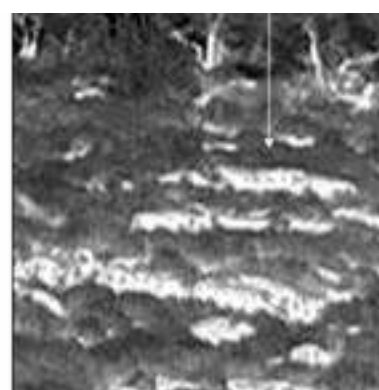
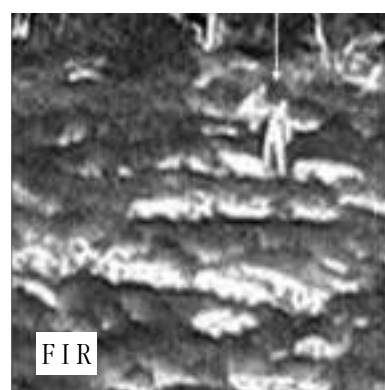
SPEC

TVC100XXL:
Weight- 1.8kg, 3.9lbs
Length- 2.5m, Width- 1.25m
TVC100L:
Weight- 0.7kg, 1.5lbs
Length- 1.25m, Width- 1m
Pack Sac:
Weight- 160 gr, 0.3lbs
Length- 50cm, Width- 28cm
depth: 15cm

PATTERNS



INTENDED USE



SNIPER KIT TVC-100 2X3

Sniper. The ultimate hunter.
We bring you a state of the art 2X3 m
Concealment kit for large body build or
situations where another person or alot
of equipment needs to be concealed with
the sniper. The 2X3 meters sniper kit will
enable you to close in on your target while
remaining undetected in the visual, IR and
FIR spectral range.
The Kit includes a backpack cover and
a 2X3 personal cover both constructed
from our unique TVC substance.

PARTS

- ▷ TVC100 2X3 (Shooting panel S/N 9002-0107)
- ▷ TVC100L (Backu S/N 9002-0025)
- ▷ Pack Sac

SPEC

TVC100 2X3:
Weight- 3.1kg, 6.8lbs
Length- 3m, Width- 2m
TVC100L:
Weight- 0.7kg, 1.5lbs
Length- 1.25m, Width- 1m
Pack Sac:
Weight- 160 gr, 0.3lbs
Length- 50cm, Width- 28cm
depth: 15cm

PATTERNS





BACKU- BACKPACK COVER

BACKU, a backpack cover designed to enhance the survivability of the operator and his gear. The BACKU conceals the user from detection in the visual, IR and FIR spectral range, enabling closer proximity to your target. The BACKU is constructed from our unique TVC substance.

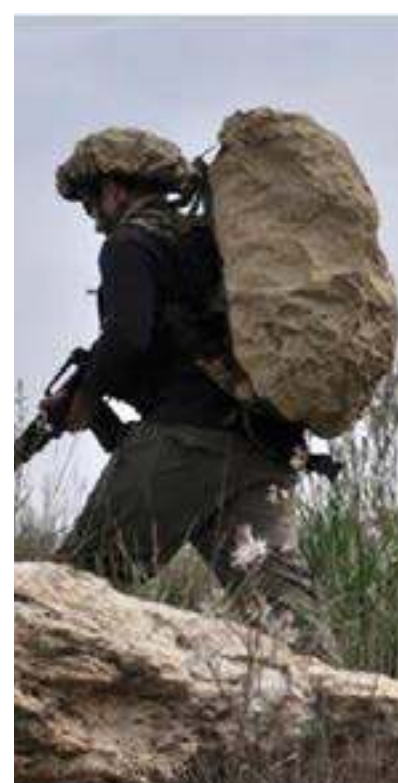
SPEC

- ▷ TVC 100
- ▷ Total Weight: 0.7kg, 1.65-lbs
- ▷ Dimensions: Length- 1.24m, Width: 975cm
- ▷ Dimensions (packed): Diameter- 15.2cm
- ▷ Includes Mil Spec straps for securing to backpack

PATTERNS



INTENDED USE



RAID CAMO SUIT

A Successful raid is all about engaged and disengaged without being compromised. To do so in a sensor saturated environment, we developed a Camo Suit that enables the user to move undetected though a wide range of environments. Our unique RAID Suit is super lightweight and modular.

SPEC

- ▷ Total Weight: 960gr, 2.11lbs
- ▷ Parts:
Body Cover: weight- 500gr, Length- 20cm, width: 12cm (Packed size)

PATTERNS



SIZES

One size fits most

INTENDED USE





FOLIAGE RAID CAMO SUIT

A Successful raid is all about engaged and disengaged without being compromised. To do so in a sensor saturated environment, we developed a Foliage Camo Suit that enables the user to move undetected though a wide range of environments. Our unique Foliage RAID Suit is super lightweight and modular.

This version is specified for landscapes rich in flora

SPEC

- ▷ Total Weight: 1.55kg, 3.4lbs
- ▷ Parts:
 - Body Cover: weight- 500gr, Length- 20cm, width- 12cm(Packed size)
 - Leg Cover X2: weight- 230gr, Length- 13cm, width- 16cm(Packed size)

PATTERNS



SIZES

One size fits most

INTENDED USE





COUNTER TRACKING OVERSHOES

The main purpose of our Counter Tracking Overshoes is to leave as minimal track as possible, unlike the deep and distinctive treads of most hiking or military boots. This makes the user harder to track, and in addition the track will not last as long as those made by normal boot treads. Fits most military boots.

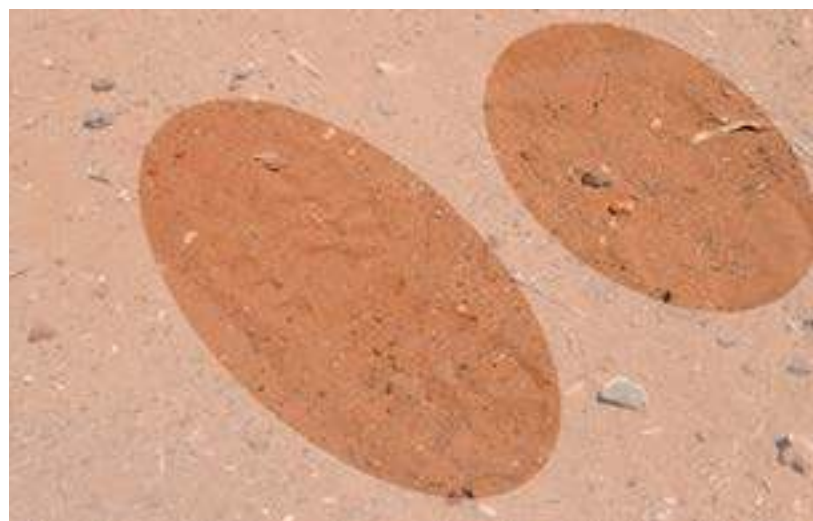
Make your troops untraceable!

- ▷ Minimal, transient, non-distinctive tracks
- ▷ Fits on most military boots

SIZES

L / XL

INTENDED USE



MITZNEFET

Our 2 Camo sided helmet cover
Perfect for breaking helmet and head silhouette.

SPEC

- ▷ Weight: 120gr, 0.26lbs
- ▷ Made from our Polyester Mesh
- ▷ FR treated

PATTERNS



Woodland Desert

INTENDED USE





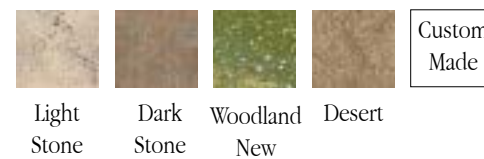
JAG HIDE

Our foremost versatile and modular concealment product.
Full coverage for all mission sets, from raids to recon, suitable for both personal and OP's.
Made from our unique TVC substance.

MULTIPLE USAGE

- ▷ Backpack cover
- ▷ Poncho
- ▷ Personal Hide
- ▷ Team OP: combine few Jag Hides and our Infrastructure Kit for a rapid set up!
- ▷ Concealment and Shelter: can be used as a sandbag
- ▷ Medical usage: splinter, stretcher, thermal blanket etc

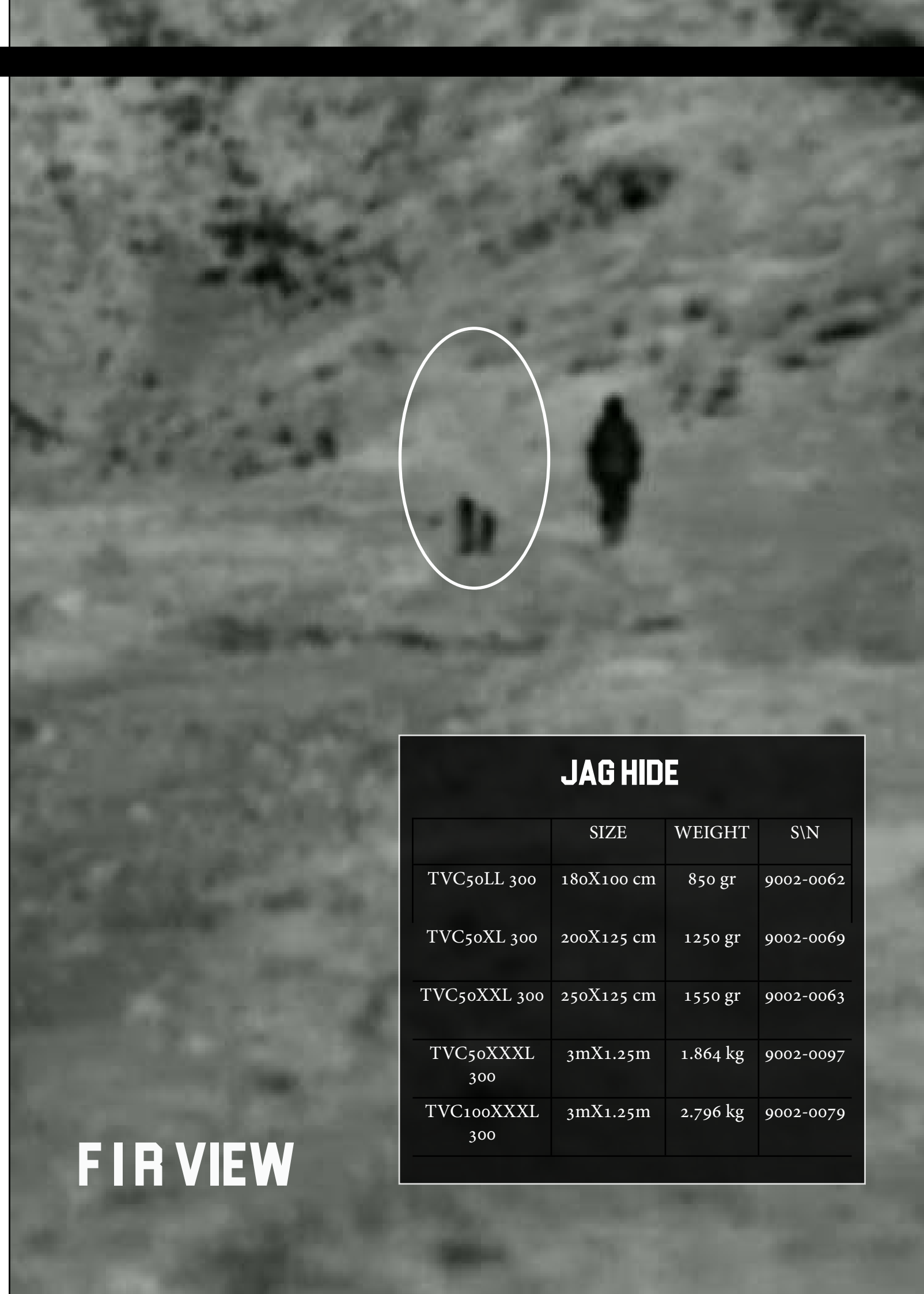
PATTERNS



INTENDED USE



PRODUCT FEATURES



FIR VIEW

JAG HIDE

	SIZE	WEIGHT	S\N
TVC50LL 300	180X100 cm	850 gr	9002-0062
TVC50XL 300	200X125 cm	1250 gr	9002-0069
TVC50XXL 300	250X125 cm	1550 gr	9002-0063
TVC50XXXL 300	3mX1.25m	1.864 kg	9002-0097
TVC100XXXL 300	3mX1.25m	2.796 kg	9002-0079



RAJUGA MASK

We have you covered!
Our Tactical Balaclava designed especially
for extreme activities.
Breathable and stretchy fabric.

FEATURES

- ▷ Special slits for Air Tube Earpieces
- ▷ Seamless at the neck, with just a flat seam on the top of head
- ▷ Can be worn under a helmet, as a hood over the face or around the neck
- ▷ Equipped with Nylon Pouch

SPEC

- ▷ Weight: 46g, 0.1lbs
- ▷ Material: Breathable Flexible Fabric
- ▷ FR Treated

PATTERNS



SIZES

one size fit most

INTENDED USE



SHOOTING PANEL

Basic concealment panel for snipers
and sharpshooters.
Constructed from our unique TVC
substance with special shooting
window, printed on both sides.

SPEC

	SIZE	WEIGHT	S/N
TVC100M	60X60 cm	218 gr	9002-0084
TVC100L	100X125 cm	760 gr	9002-0059
TVC100XL	200X125 cm	1.5 kg	9002-0029
TVC100XXL	250X125 cm	1.8 kg	9002-0030

PATTERNS



INTENDED USE



FIR





RAJUGA PONCHO

Essential camouflage product, Versatile and multipurpose use - from hunting and airsoft to police and military operations.

FEATURES

- ▷ Allows Full maneuverability and Complete functionality during combat
- ▷ Low volume and weight
- ▷ Reversible: two sided coloration

SPEC

- ▷ Weight: 1.175kg, 2.6lbs
- ▷ Main fabric: polyester mesh 240gr
- ▷ Size: 2.4mX1.5m, 7.9ftX4.9ft
- ▷ FR Treated

PATTERNS



SIZES

one size fit most

INTENDED USE



RAJUGA PONCHO ULTRA LIGHT

Essential camouflage product. Versatile and multipurpose use - from hunting and airsoft to police and military operations. Our poncho is ultralight for maximal maneuverability and comfort.

FEATURES

- ▷ Allows Full maneuverability and Complete functionality during combat
- ▷ Low volume and weight

SPEC

- ▷ Weight: 220gr, 0.4lbs
- ▷ Main fabric: knitted fabric 213g
- ▷ Size: 2.4mX1.5m, 7.9ftX4.9ft

PATTERNS



SIZES

one size fit most

INTENDED USE





MESH GHILLIE SUIT

A 3 pieces (trousers, torso, headcover) suit, with reversible sides - woodland and desert camo patterns.

SPEC

- ▷ Weight: 1.175kg, 2.6lbs
- ▷ Main fabric: polyester mesh
- ▷ Size: 2.4mX1.5m, 7.9ftX4.9ft
- ▷ FR Treated

PATTERNS



Woodland Desert

SIZES

one size fit most

INTENDED USE



Credit: Reuven Castro - Walla News



STRETCHER STRAPS SET

Transforms any TVC XL panel into an evacuation stretcher for personnel and equipment.

FEATURES

- ▷ 4 handles for lift
- ▷ 4 straps to carry stretcher
- ▷ Ability to operate arms while carrying
- ▷ Rapid release mechanism on each carrying strap

SPEC

- ▷ Total Weight: 1kg
- ▷ Dimensions (packed): Length- 36cm, Width- 18cm
- ▷ Thickness: 10cm (when entirely packed)
- ▷ Made of Cordura 1000D and 500D for extensive durability

COLORS



Ranger Green Olive Green Tan Black



INTENDED USE





RAJUGA VIPER HOOD



The element of surprise is a force multiplier, especially for snipers and assault troops. The Rajuga Viper Hood helps secure that critical advantage for your troops.

- ▷ Designed for complex environments
- ▷ Suitable for concealment from Visual to Thermal (FIR) detections
- ▷ Fully compatible with standard combat gear: helmets, plate carrier, backpack etc.
- ▷ All the benefits of a Ghillie suit - with none of the encumbrance.

Tactical Applications:

- ▷ LP/OP
- ▷ Reconnaissance/Intelligence
- ▷ Surveillance
- ▷ Dismounted Patrol
- ▷ Ambush

FEATURES

- ▷ Multispectral Concealment
- ▷ Reversible: 2 color option
- ▷ Adjustable chest tension strap
- ▷ Multiple tension cords throughout for adjustment fit
- ▷ Nylon webbing is bar-tacked throughout entire outer shell to accommodate the use of foliage and fiber garnish
- ▷ Ventilation and observation apertures in sides of hood
- ▷ Compatible with most tactical helmets

SPEC

- ▷ Made from our unique TVC substance

PATTERNS



Light
Stone



Dark
Stone



Woodland
New

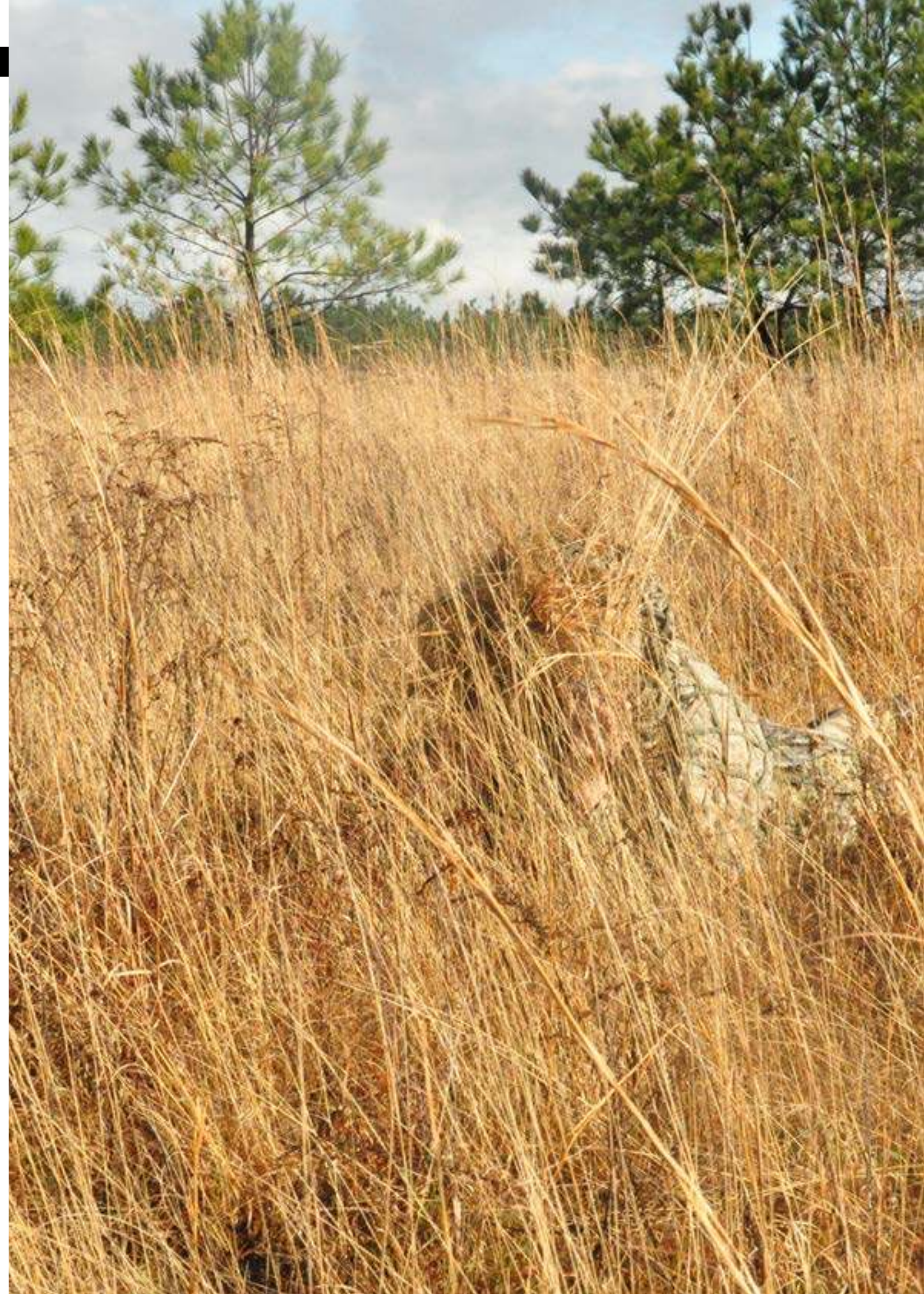


Desert



Custom
Made

INTENDED USE



INFRASTRUCTURE KIT

SQUAD INFRASTRUCTURE KIT

MOR CONCEALMENT KIT

TERRACON SAF CAMO KIT

HASTY CAMO KIT

SPIKE CAMO KIT

URBAN JAGUAR KIT

URBAN JAGUAR MINI KIT

OBSERVATION POSTS CONCEALMENT



INFRASTRUCTURE KIT

The infrastructure kit is a Supportive element for hides, Perfect for fire base and Reconnaissance positions.

SPEC

- Designed for 4-6 persons
- Total Weight: 10lbs, 4.5kg
- Footprint Measurements: 2.4X1.5m, 8X5 Ft
- Kit size when packed: 50X20cm, 0.6X1.7Ft
- Aluminum poles
- Mil Spec Straps
- Mil Spec Nylon buckles and hardware

INTENDED USE



PARTS



Fly



Footprint



Pack Sack



Poles



SQUAD INFRASTRUCTURE KIT

The squad infrastructure kit is supportive element for hides, perfect for fire base and reconnaissance positions.

Light enough to be comfortably carried by one man, large enough to conceal an entire squad.

SPEC

- Designed for 2-4 persons
- Total Weight: 2kg, 4.4lbs
- Footprint Measurements: 175X125cm 5.7X4.1Ft
- Kit size when packed: 50x20cm, 0.6X1.8Ft
- Aluminum poles
- Mil Spec Straps
- Mil Spec Nylon buckles and hardware

INTENDED USE



PARTS



Fly



Footprint



Pack Sack



Poles



MOR CONCEALMENT KIT

The Mor concealment kit purpose is to conceal a 4-6 man unit in a various terrain.

PARTS

- ▷ 6 TVC100L Panels - 9002-0006
(dimensions: 1.25mX1m)
- ▷ 6 TVC100XL Panels - 9002-0007
(dimensions: 1.25mX2m)
- ▷ Infrastructure Kit - 9004-0002
Duffel bag size XXL - 9007-0361

SPEC

- ▷ Total Weight: 18kg
- ▷ Total TVC Coverage: 22.5sqm

PATTERNS



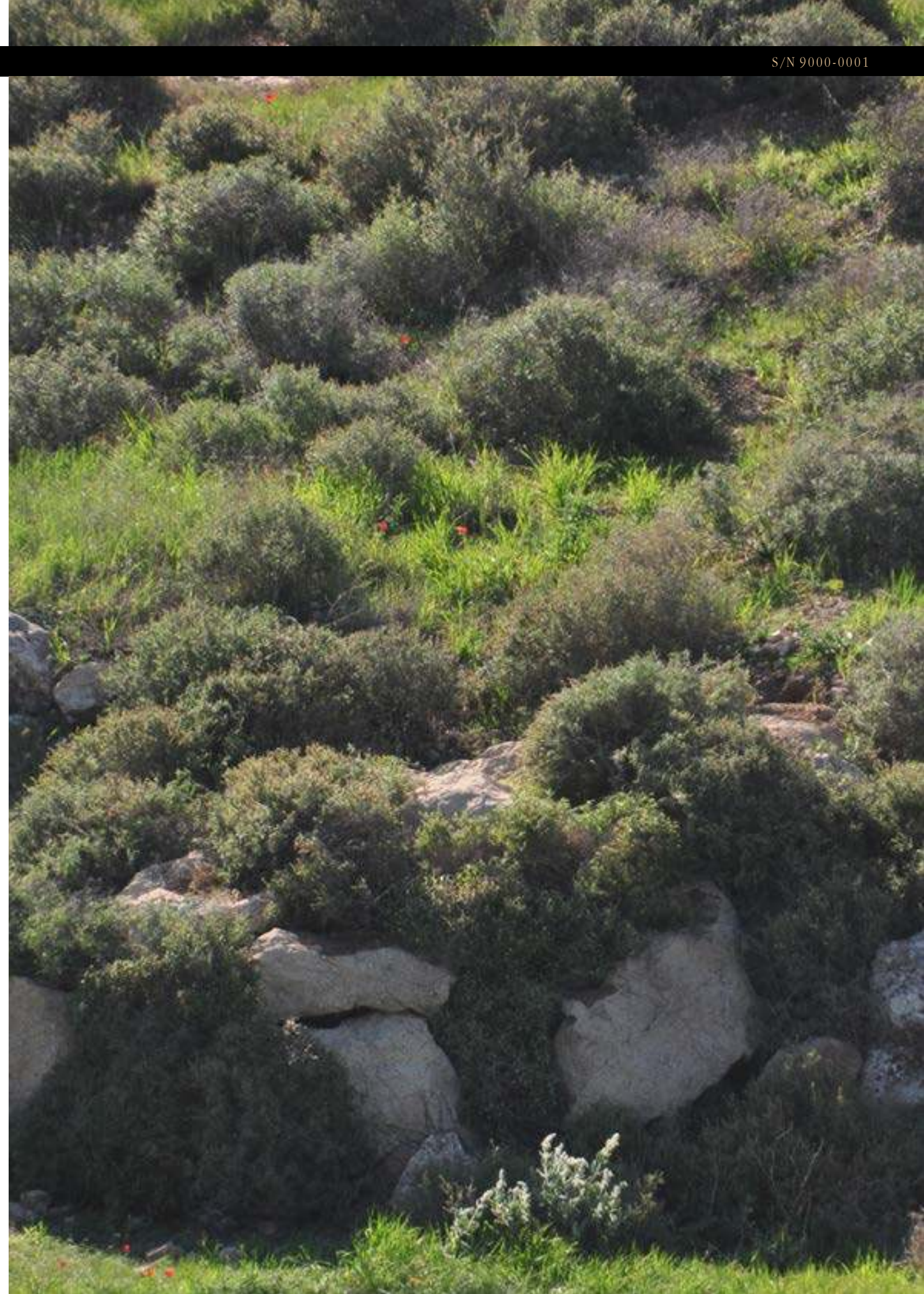
INTENDED USE



Infrastructure Kit



Infrastructure Kit





TERRACON SAF CAMO KIT

A 2-4 man unit observation/ fire base squad camouflage kit.
Constructed from our unique TVC substance and camouflage mesh, both dual side printed according to end user specifications.

FEATURES

- ▷ Shoot through / See through mesh
- ▷ Replaceable Camo Mesh
- ▷ Rugged Infrastructure
- ▷ Dedicated straps for adding natural cover
- ▷ Hasty set up - 5 minutes, 2 people
- ▷ FR Treated
- ▷ 2 Sided coloration
- ▷ Our unique TVC

VIS



NIR



FIR



Infrastructure



Poles



Strap



pegs



TK Pack

PARTS

- ▷ TVC Mesh: 3m x 3m - 9003-0039
- ▷ Footprint Strap - 9004-0043
- ▷ 4X (Mil Spec) pegs - 9100-0367
- ▷ 4X Squad Infrastructure Poles- 9004-0042
- ▷ TK Pack - 9007-0688

SPEC

- ▷ TVC Mesh: Size - 3mX3m, Wt - 3.8kg
- Accessories:**
- ▷ Footprint Strap: 175X125cm / 5.7X4.1ft
- ▷ Pegs X4: 442gr
- ▷ Poles X4: 1kg
- ▷ Kit size when packed: length: 60cm
Dia: 30cm
- ▷ Total Weight (TVC & Accessories): 6kg

MESH PATTERNS



Woodland
Desert
New

INTENDED USE





HASTY CAMO KIT

A 4-6 man unit observation/ fire base squad camouflage kit.

FEATURES

- ▷ Shoot through / See through mesh
- ▷ Replaceable Camo Mesh
- ▷ Rugged Infrastructure
- ▷ Dedicated straps for adding natural cover
- ▷ Hasty set up: 10 minutes
- ▷ Include waterproof footprint

PARTS

- ▷ Mesh: 4.5m X 4.5m
- ▷ Infrastructure Kit - 9004-0002
- ▷ Duffel bag size XXL - 9007-0361
- ▷ FR Treated

PATTERNS



Woodland Desert

INTENDED USE



SPIKE CAMO KIT

Our spike camo kit increases the survivability of a Spike System and it's operators. Made out of Polaris Unique TVC material. Provides rapid setup and breakdown capability of the concealment hide. Provides operators with a wide area of operation to increase survivability and sustainability.

FEATURES

- ▷ Versatility: adaptation to varied environments
- ▷ Multi-Spectral concealment suitable for the modern, advanced sensor saturated battlefield
- ▷ Easy Transport: minimal weight and volume enables concealment even at close proximity to threat
- ▷ Shelters operator and system from extreme environmental conditions

PARTS

- ▷ 1 X Infrastructure Kit - 9002-0004
- ▷ 2 X JAG HIDE XXL 300 - 9002-0063
- ▷ 6 X JAG HIDE XL 300 - 9002-0069
- ▷ Duffel bag size XXL - 9007-0361

PATTERNS



Light Stone Dark Stone Woodland New Desert

INTENDED USE





URBAN JAGUAR KIT

Defense and homeland security forces increasingly operate in urban environments; from SF units in Afghan towns combating terror to SWAT teams combating drug dealers in major cities. The urban environment poses unique challenge for snipers and others who need to see without being seen. Our Urban Camo Kit provides the operator the ability to do precisely that.

SPEC

Measurements (packed Kit):

- ▷ Length: 60cm
- ▷ Weight: 3.8kg, 8.3lbs
- ▷ Diameter: 18cm

Measurements (Deployed):

- ▷ Height: 200cm
- ▷ Length: 200cm

PARTS:

- ▷ Pack Sac:
 - Made from Nylon 420 fabric
 - Can be used to close other openings (such as doors)
 - Measurements:
Length- 3m, Width- 2.2m
 - Can be separated into two 1.5mX2.2m parts

Mesh:

200g Sq.M

Poles:

Aluminum 7075

INTENDED USE



URBAN JAGUAR MINI KIT

Defense and homeland security forces increasingly operates in urban environments. The urban environment poses unique challenge for snipers and others who need to see without being seen. Our Mini Urban Camo Kit provides the operator the ability to do precisely that.

Specially designed for confined spaces.

SPEC

Measurements (packed Kit):

- ▷ Length: 63cm
- ▷ Weight: 2.3kg
- ▷ Diameter: 15cm

Measurements (Deployed):

- Length: 150cm
- Height: 170cm

PARTS:

- ▷ Pack Sac:
 - Made from Nylon 420 fabric
 - Can be used to close other openings (such as doors)
 - Measurements:
Length- 3m, Width- 2.2m
 - Can be separated into two 1.5mX2.2m parts

Mesh:

200g Sq.M

Poles:

Aluminum 7075

INTENDED USE



Without the kit

With the kit

Without the kit

With the kit

ATVC MODULE

ARMADILLO

M-PACS



VEHICLES



ATVC MODULE

The ATVC (All Terrain Vehicle Concealment) Module, is a concealment element designed to conceal large objects such as vehicles, Humvees etc.

Constructed from our unique TVC substance and camouflage mesh, both dual side printed according to end user specifications.

USAGE EXAMPLES:

ATV Single seat -
(such as "Polaris Sportsman")- one module

ATV Multi seat -
(such as "Polaris MRZR")- 4 modules

Vehicle (such as "Polaris Dagor") - 6 modules

SPEC

▷ Total Weight: 6.3kg (without cover)

▷ Dimensions: Length-4m, Width-2m

▷ Total Coverage: 8sqm.

PATTERNS



Light
Stone



Dark
Stone



Woodland
New



Desert



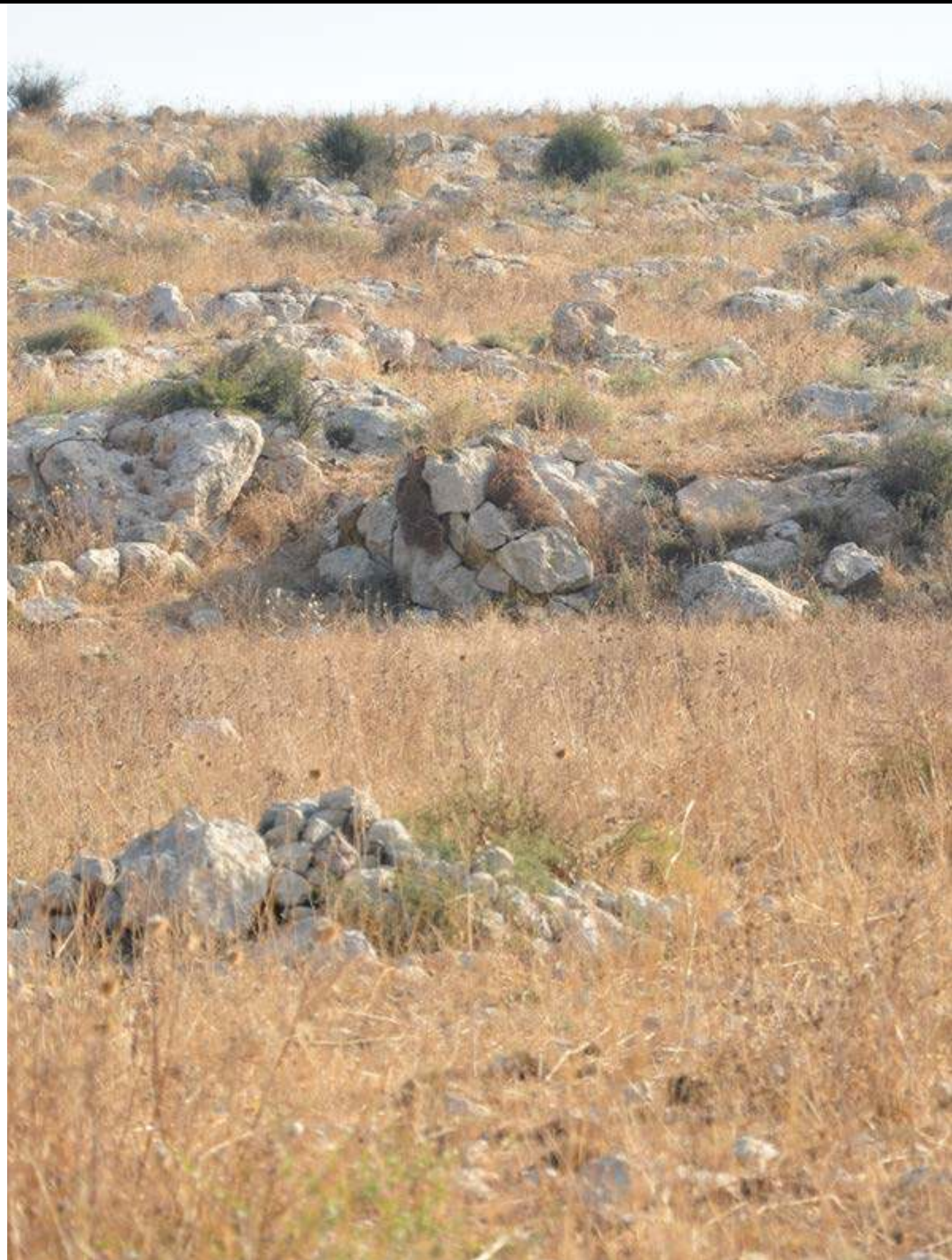
Custom
Made

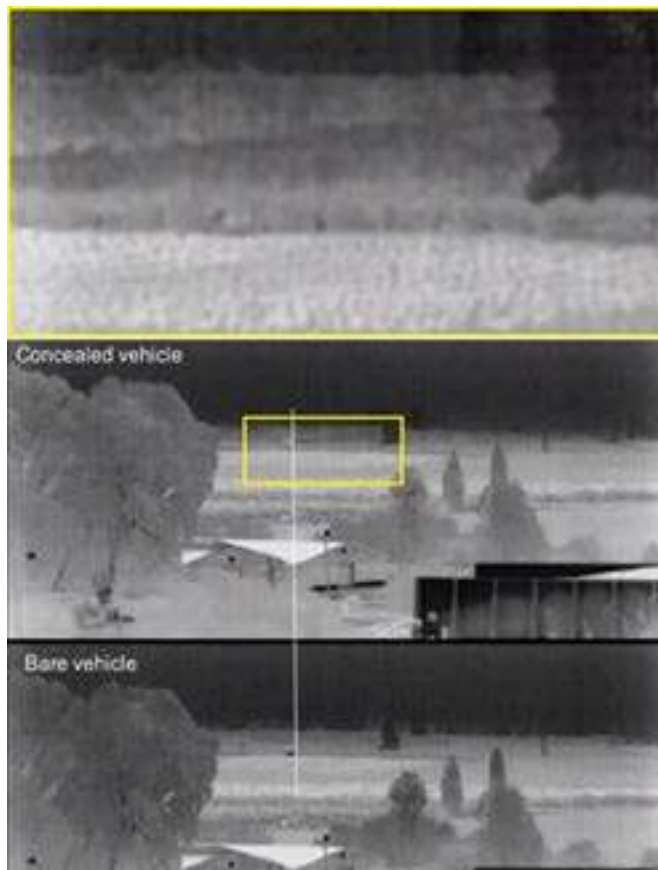


PRODUCT FEATURES



INTENDED USE





ARMADILLO

ARMADILLO is a customizable concealment kit for any vehicle or platform. The kit parts are constructed from our unique TVC substance to enable the user blending in the environment without being detected. The TVC conceals objects in the Visual, IR and FIR spectrum.

SPEC

Dimensions: customizable for any platform
Weight: 1.9kg, 5.8lbs

PARTS

- ▷ Various panels according to the platform silhouette
- ▷ Connection to the platform by rapid release elements

2-SIDED COLORATION

The TVC can be printed on each side to resemble the coloration of a specific or general AOR. We developed a digitized coloration technique that can generate any color pattern from basic color. This enables us to rapidly develop customizable camouflage patterns

PATTERNS



M-PACS

The M-PaCS (Modular Platform Concealment System) is the most advanced static concealment cover for platforms.

- ▷ Designed for SF use
- ▷ Provides 3D cover for users
- ▷ Retains multispectral concealment and a break away function

The M-PaCS can be customized to be compatible with any platform from ATV's to Humvees and other vehicles.

FEATURES

Tactical:

- ▷ Multispectral Concealment
- ▷ 3D Camouflage
- ▷ Reversible: 2 Sided Coloration
- ▷ 360 Degrees Cover
- ▷ Observation & Gun system Operation While Covered
- ▷ Field Adaptable Capability
- ▷ Short Detection Range
- ▷ Low Volume & Weight
- ▷ Fast & Simple Deployment & Folding
- ▷ Quick Release

Logistics:

- ▷ Can be installed with Drip Rail system
- ▷ Up to 10 minutes operational assembly for 360 degrees cover
- ▷ can be assembled and disassembled by one operator if needed
- ▷ Integrated infrastructure inside the cover allowing space for rest, observation, mechanical repairs, medical treatment
- ▷ Short instruction time
- ▷ Modules can be quickly disconnected from the roof for air transportation





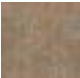



SPEC

This spec is for M-Pacs designed for a Land Rover Defender

Module	Weight	Coverage
Front Module	21.3 pound {9.7 kg}	Length - 9.8 ft {3m} Width-6.5 ft {2m}
Side Module (R)	42.5 pound {19.3 kg}	Length - 9.8 ft {3m} Width-14.5 ft {4.5m}
Side Module (L)	42.5 pound {19.3 kg}	Length - 9.8 ft {3m} Width-14.5 ft {4.5m}
Rear & Top Module	36.7 pound {16.7 kg}	Length - 19.6 ft {6m} Width-6.5 ft {2m}
L Mount system	31 pound {14 kg}	
Total	174 pound {79 kg}	

PATTERNS



Custom
Made

Light Stone Dark Stone Woodland New Desert

INTENDED USE



info@kasda.co.il
www.kasda.co.il
+972 58 555 7956

M-PACS-50 METER



CUSTOM MADE PANELS

CAMOUFLAGE AND SURVIVABILITY TRAINING

CAMO SCHEME DEVELOPMENT

POLARIS MESH

TRAINING AND SOLUTIONS



CUSTOM MADE PANELS

With over 20 years of combined Military and Law Enforcement experience, we have seen our share of Camouflage and Concealment equipment. As part of our ongoing work with SF elements we found ourselves making specific requirements concealment covers, including gun, observation equipment, and vehicle covers. Mission specific concealment products is a major part of our DNA.

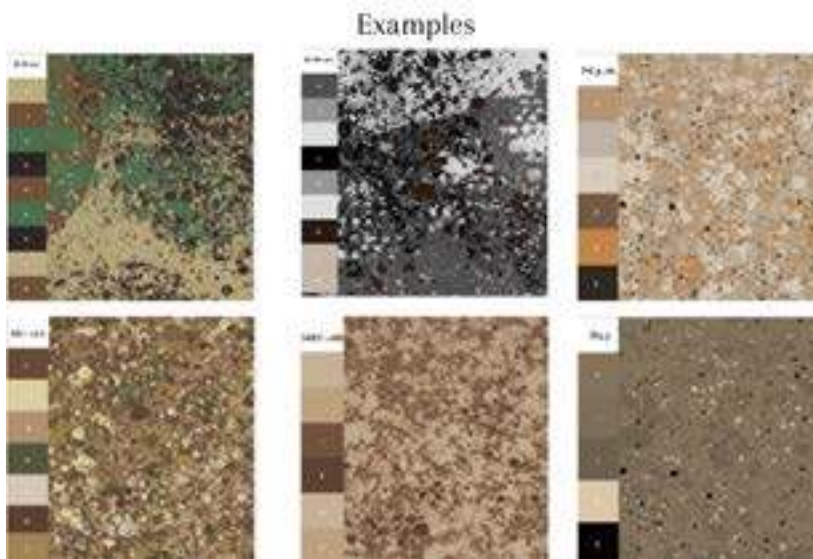
FEATURES

- ▷ Specific purpose
- ▷ Specific camouflage patterns
- ▷ Mimic a specific object
- ▷ Design to cover a specific combat gear
- ▷ Specific materials requirements

We are the experts in custom designed Camouflage and Concealment gear for your precise applications. We develop our gear from a tactical user's perspective and deep understanding of the environment.

INTENDED USE





CAMO SCHEME DEVELOPMENT

As experts in concealment, we offer our clientele the chance to develop their individual Camo Scheme. Our scheme development method is based on hundreds of tests and evaluations of different schemes in different environments. After establishing the scheme, it is digitally saved in our library for future usage. Our method enables us to develop schemes to infinity of patterns (rural, urban etc). The scheme than can be printed on various martials (mesh, fabrics, stickers etc) and is the camouflage pattern for all of our concealment products. We can also work with HI-RES pictures to develop a pattern.



POLARIS MESH

Polaris mesh is a camouflage textile made of 100% polyester. The mesh has 2 diffrent camouflage patterns on each side for use in different terrain. Polaris Mesh is lightweight and can be used as a quick solution to conceal gear, personal and vehicles in the battlefield.

SPEC

- ▷ Material: 100% polyester
- ▷ Weight per square meter: 220gr (Tolerances: +/- 1.5%)
- ▷ Holes size: 2mm
- ▷ Width of roll: 150cm
- ▷ FR treated
- ▷ Patterns - The mesh is printed on both sides with different camouflage patterns (Woodland / Desert)

PATTERNS



SIZES

Taylor-made size

INTENDED USE





CONTACT US

We are here to answer any question!

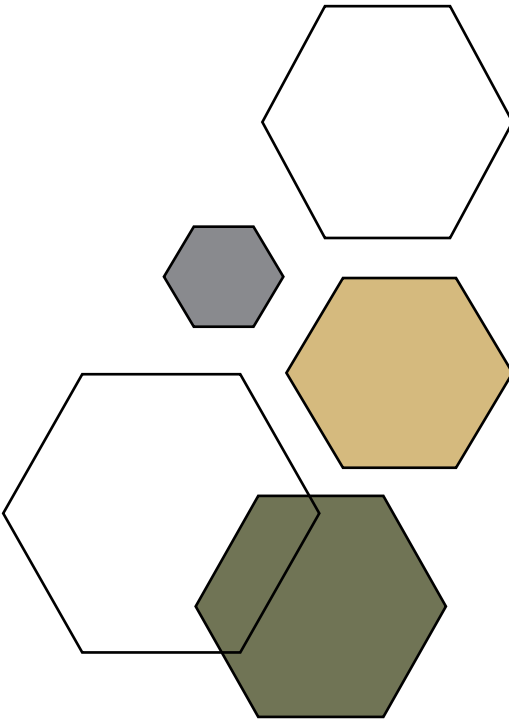
Email: info@kasda.co.il

Phone: +972-54-7557420

You are also welcome to visit us at our offices at Tel Giborim St. 5, Tel Aviv
Please coordinate your visit with us in advance.

FOLLOW US

www.kasda.co.il





info@kasda.co.il
www.kasda.co.il
+972 58 555 7956
Tel Giborim St. 5, Tel Aviv, Israel